



# Tuesday News

St. Hilary of Poitiers School Weekly Newsletter  
December 19, 2023



@SaintHilary



215-887-4520



[sainthilaryschool.com](http://sainthilaryschool.com)



[news@sainthilaryschool.com](mailto:news@sainthilaryschool.com)

## BREAKING NEWS



★ Reminder Pastors Holiday - **Friday, December 22nd NO School**. Thank you Father Murray!!

★ **Christmas Dress Down** day tomorrow!

★ **NO PM Cares** this Thursday, Dec 21st.

★ Christmas Program this **Thursday at 6 PM**.



Dec 20 Knitting Club  
Dec 21 Christmas Program - 6 PM  
Dec 22 Pastors Holiday -  
**NO School**  
Dec 23- Christmas Holiday  
Jan 2  
Jan 15 Martin Luther King Jr. Day  
**NO School**  
Jan 28 - Catholic Schools Week  
Feb 3

## Annual Christmas Program this Thursday Night!

Please scroll to see info on our upcoming  
Christmas Program at 6 pm on 12/21

**\*\*Students are to arrive by 5:45 PM\*\***



\*\*\*General School Questions? Email: [hsa@sainthilaryschool.com](mailto:hsa@sainthilaryschool.com)\*\*\*



*Picture Retakes will be January 25th*

---

*Christmas Dress Down Day tomorrow,  
Dec 20th.*

*Wear Christmas Attire or Christmas Colors ~  
Red & Green.*



---

*~Lunch Menu Update this week ~*

**Wednesday - French Toast \$3**

**Thursday - Pizza \$2**

---

Reminder there is no PM CARES this **Thursday, December 21.**

---

REMINDER that Sunday Mass Times will change in January.

2024 Winter/Spring/Fall Schedule  
(January thru June & September thru December)

**Saturdays at 5:00pm**  
**Sundays at 8:30am and 10:30am**

# Christmas at St. Hilary's

## *Advent & Christmas*

Daily Mass  
Mon-Fri @ 8am

Taize Prayer Service  
Wed, Dec 13 @ 6:30pm

Exposition of Blessed Sacrament  
Mondays 8:30 to 4pm

4th Sunday of Advent Masses  
Sat, Dec 23 @ 5pm  
Sun, Dec 24 @ 9am & 11am

Confessions  
Saturdays 4-4:45pm  
Sundays 11-11:45am  
Monday, Dec 18 @ 7pm

Christmas Masses  
Sun, Dec 24 @ 4pm  
Mon, Dec 25 @ 9am & 11am

 St Hilary  
of Poitiers



# Safe Environment Requirements for Volunteers

All volunteers who may have any possible contact with children in a parish/school function, or a function that takes place on school or parish property, must have official paperwork filed with the parish office.

*Complete the following items and send them to the Rectory for Filing. Our School and Students THANK YOU for taking the time to Volunteer.*

## 1. SAFE ENVIRONMENT PART 1: PROTECTING GOD'S CHILDREN FOR ADULTS

REGISTRATION IS AS FOLLOWS:

Go to website: [https://www.virtusonline.org/virtus/reg\\_list2.cfm?theOrgID=18461&theme=0](https://www.virtusonline.org/virtus/reg_list2.cfm?theOrgID=18461&theme=0)

- Scroll down to find all available Sessions and then register accordingly.
- It'll give you all the sites for the Safe Environment sessions; pick one and then register accordingly

**Look out for more ONLINE or LOCAL CLASSES**

## 2. SAFE ENVIRONMENT PART 2: MANDATORY REPORTING OF SUSPECTED CHILD ABUSE

*(must be completed online)*

REGISTRATION IS AS FOLLOWS:

Go to website: <https://childyouthprotection.org>

- Click on "Training Institute" tab
- Register
- You'll get an email to get into the training
- Click onto the email to do the training
- At the end, you'll be able to print off a Mandated Reporter certificate – bring to Rectory

## 3. PA STATE POLICE CRIMINAL BACKGROUND CHECK - (renewable every 5 years)

- Go to <https://epatch.state.pa.us/Home.jsp>

## 4. PA CHILD ABUSE HISTORY CLEARANCE - (renewable every 5 years)

- Go to <https://www.compass.state.pa.us/cwis/public/home>

## 5. DISCLOSURE STATEMENT APPLICATION FOR VOLUNTEERS

*(if Pennsylvania resident for 10 continuous years)*

- See attached Disclosure Statement for signature

# December Prayer Partner Activity

## RESPECT for OTHERS

The children read : *A Little Respectful Spot* by Dianne Alber

▶ Story Time with Lynn "A Little Respectful Spot"

- Each student completed a color by number page. Older students helped with reading and understanding each example on the handout.
- Each partnership created one Acrostic poem using the word RESPECT. Older students took the lead on this activity.

Example:

R - Respond politely

E - Ears set to "listening"

S - Stay focused

P - Prove ideas

E - Express your opinions

C - Complete your assignments

T - Take turns

These poems will be shared on WSHS during the month of December. During these difficult times in our society, it is so important to keep **RESPECT** alive and well in our daily lives. As adults, we need to model **RESPECT** for our children in our words and actions in every moment of every day.

This is our mission ...to live in PEACE with one another. Jesus came to teach us how to live this mission. Let us follow Him together.

**May PEACE BE WITH YOU!**





A very special feeling of warmth and LOVE  
will be felt this Christmas because of  
**YOU!!!**

In the name of the men, women and children at  
**Face to Face,**  
who will be the recipients of your  
generous response to our **GLOVE DRIVE,**  
This simple  
**THANK YOU**  
Is deeply felt.

**The SON**  
is certainly shining over  
**Germantown and RYDAL**  
with HIS Warm LIGHT and LOVE!!!

**God Bless Us ALL!!!**







## December Lunch Menu



Monday	Tuesday	Wednesday	Thursday	Friday
4 Tater Tots \$3	5 French Toast Sticks \$3	6 Chicken Nuggets \$3	7 Pizza \$2	8 <b>NO School</b>
11 Tater Tots & Chicken Tenders \$3	12 Mozzarella Sticks \$3	13 Hot Dog \$2	14 Chicken Nuggets \$3	15 Pizza \$2
18 Chicken Noodle Soup \$3	19 Pizza \$2	20 French Toast Sticks \$3	21 Pizza \$2	22 <b>NO School</b>

# Christmas Program 2023

Thursday,  
December 21st  
6:00 PM

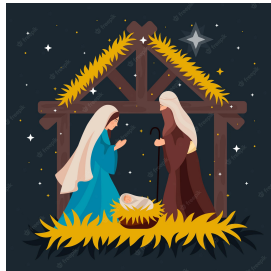
Grade 8 will follow their own directions.

Pre K through Grade 7 need to be back to school by 5:45PM

Pre K and K, Gr 1 and 2 ... teachers will let parents know what attire they are to wear.

Grades 3 through 7 will wear full Winter Uniforms

We look forward to being with you as we tell the story of the Birth of Jesus





# January CARES Calendar

Family Name \_\_\_\_\_

CARES January 2024						
Sun	Mon	Tue	Wed	Thu	Fri	Sat
	1	2	3	4	5	6
7	8	9	10	11	12	13
14	15	16	17	18	19	20
21	22	23	24	25	26	27
28	29	30	31	1	2	

Please return to CARES as soon as possible [cares@sainthilaryschool.com](mailto:cares@sainthilaryschool.com)  
 Child: \$3.50 / half hour ~ 2 Children: \$5.00 / half hour ~ 3 Children: \$6.00 / half hour

Number Of Children    X    \_\_\_\_\_    FEE    \_\_\_\_\_    X    \_\_\_\_\_    HOURS    \_\_\_\_\_    =    \_\_\_\_\_    TOTAL

# CYO CORNER

Finishing up most of the games for 2023, the JV Girls Region and JV Boys Parish teams registered wins, while the Novice boys got ready for their season with a full team scrimmage. Merry Christmas and Happy New Year!

## SCOREBOARD

### Varsity Girls

Date	Time	Opponent	Location	Score
12/16/2023	2:15pm	OLGC	Our Lady of Good Counsel Gym	N/R
12/17/2023	6:15pm	St. Alphonsus	Abington Friends [Triangle Gym]	L 39-9
12/22/2023	6:00pm	St. David/OLH	Our Lady Help of Christians Gym	TBP

### Varsity Boys

Date	Time	Opponent	Location	Score
12/14/2023	7:30pm	St. Genevieve	Enfield ES	L 52-20
12/16/2023	3:30pm	OLGC	Our Lady of Good Counsel Gym	L 33-26
12/22/2023	7:30pm	Nativity	Nativity of Our Lord Gym [Full Court]	TBP

### JV Girls - Region Team

Date	Time	Opponent	Location	Score
12/16/2023	11:20am	St. John/St. Robert	St. Robert Bellarmine Gym	W 17-10
12/17/2023	1:30pm	St. Alphonsus	St. Alphonsus Gym	L 8-15
1/7/2024	1:30pm	St. Albert	Abington Friends [Triangle Gym]	TBP

### JV Boys - Region Team

Date	Time	Opponent	Location	Score
12/16/2023	1:00pm	OLGC	Our Lady of Good Counsel Gym	L 57-26
12/17/2023	2:45pm	St. Genevieve	Abington Friends [Triangle Gym]	N/R
1/4/2024	7:30pm	St. Albert	St. Albert the Great Gym	TBP

### JV Girls - Parish Team

Date	Time	Opponent	Location	Score
12/16/2023	1:20pm	St. Luke	Abington JHS (Court A)	N/R
1/7/2024	3:40pm	Nativity	Nativity of Our Lord Gym [Full Court]	TBP

### JV Boys - Parish Team

Date	Time	Opponent	Location	Score
12/16/2023	7:00pm	St. Catherine	Simmons ES	L 25-15
12/17/2023	12:15pm	St. Anthony	Gwynedd Mercy ES	W 19-14
12/23/2023	10:15am	St. Alphonsus	St. Alphonsus Gym	TBP

### Novice Boys

Date	Time	Opponent	Location	Score
1/6/2024	10:50am	Nativity	Nativity of Our Lord Gym [Full Court]	TBP
1/20/2024	10:15am	OMC	Crefeld School	TBP
1/20/2024	2:30pm	St. Luke	Ardsley Community Center	TBP

### Novice Girls

Date	Time	Opponent	Location	Score
1/6/2024	10:00am	St. Genevieve	Seven Dolors Gym	TBP
1/13/2024	10:00am	St. Genevieve	Seven Dolors Gym	TBP
1/14/2024	1:30pm	St. Genevieve	Abington Friends [Triangle Gym]	TBP







Scan here  
to register!



Help your school  
earn a share of  
**\$500,000**

Dear Parents,

Educational technology and funding changes daily. To keep up with these changes and expenses, our school is partnering with Weis Markets in their annual Weis 4 School program. Register your Weis Rewards card online at [weis4school.com](https://weis4school.com). By participating in this program, we can earn money for our school by simply shopping. Once you register, you're in the program and you do not need to register again this school year. Please share this information with your friends and family. The more interest and enthusiasm we generate, the greater the benefits to our school.

**Thank you for your support.**

[weismarkets.com](https://weismarkets.com)





# EARN CASH FOR YOUR SCHOOL

LITTLE BY LITTLE WE CAN MAKE A BIG DIFFERENCE.

The Box Tops mobile app uses state-of-the-art technology to scan your store receipt, find participating products and instantly add Box Tops to your school's earnings online.

LOOK  
FOR THE  
LABEL:



## HERE'S HOW IT WORKS:



### BUY BOX TOPS PRODUCTS

You can find Box Tops on hundreds of products throughout the store.



### SCAN YOUR RECEIPT

Use the app to snap a photo of your receipt within 14 days of purchase.



### EARN CASH FOR YOUR SCHOOL

Box Tops earnings are identified and automatically updated online.

## SHOPPING FOR GROCERIES ONLINE?

You can still earn Box Tops for your school with your e-receipt!

See how at [BTFE.com/emailgroceryreceipts](https://www.btfe.com/emailgroceryreceipts)



## BOX TOPS CLIPS

You may occasionally find an old Box Tops clip on packages in stores. **You can still clip them and send them to school**, as long as each clip has a valid expiration date.

SEE PRODUCTS & LEARN MORE ABOUT  
THE BOX TOPS APP AT [BTFE.COM](https://www.btfe.com)

DON'T HAVE THE BOX TOPS  
APP YET? DOWNLOAD IT NOW:



© General Mills

# JOINING OUR SCRIP PROGRAM

## What is Scrip Fundraising?

Scrip is fundraising while you shop®! You buy gift cards for over 780 retailer brands you already shop at and earn a rebate on every gift card you purchase at face value. That rebate goes right to our organization, and we can divvy up the earnings however we see fit, including giving a portion back to you!

## How it Works

We run our scrip program through ShopWithScrip.com, who has worked with over 30,000 nonprofit organizations over the course of 23 years. You'll need to sign up and create an account to order online.

### Creating an Account

- You register online by going to [www.ShopWithScrip.com](http://www.ShopWithScrip.com) and clicking Get Started.



- Click Join Your Program, and enter our enrollment code which will link your account to our organization.

ENROLLMENT CODE: 6E5452746187



- Fill out the required information and click Register. You'll answer two challenge questions and provide answers.



- Then you'll be ready to order online and earn!

JOINING OUR SCRIP PROGRAM





## Potential Earnings with Scrip

For your first order, you might just purchase scrip for your gas and groceries. Once you get used to it, though, you can earn on every section of your budget, including: dining out, shopping, home improvement, and travel and vacations.

Look at what you could earn:

ITEM	AVERAGE REBATE	SPENDING PER MONTH	EARNINGS PER YEAR
GROCERIES	4%	\$335	\$160
FOOD OUT: CASUAL AND FAST FOOD	8%	\$250	\$240
GAS	3%	\$175	\$60
ENTERTAINMENT	5%	\$240	\$140
CLOTHING AND ACCESSORIES	9%	\$150	\$170
HOME IMPROVEMENT	4%	\$150	\$70
VACATIONS	6%	\$330	\$240
TOTAL		\$1,300 per month	\$1,080 per year!

Numbers based on national averages for a family of four.

## Scrip Products



**Physical Gift Cards** — These are the same gift cards you get at the store. Use them instead of cash or a credit card!



**Reload and ReloadNow®** — Some physical gift cards are available for either Reload or ReloadNow. Register an eligible gift card you purchased from ShopWithScrip and add funds to it when the balance is running low. Funds will be added overnight for cards that offer Reload, and instantly for ones that offer ReloadNow when you pay with PrestoPay™.



**ScripNow®** — ScripNow is an eCard that you can buy and receive instantly. You can print off ScripNow, or redeem it on your mobile device for certain retailers. They are immediately available when you pay with PrestoPay.

JOINING OUR SCRIP PROGRAM







**MyScripWallet™** — MyScripWallet is ShopWithScrip's mobile website that you can use to order ScripNow, Reload, and ReloadNow on-the-go. It's perfect for adding funds to your gas card or for ordering ScripNow during an unexpected dinner out!

To go mobile, go to [www.MyScripWallet.com](http://www.MyScripWallet.com) on your web browser on your phone and log in with your ShopWithScrip account. You have to be signed up for PrestoPay, then you can order ScripNow, Reload, and ReloadNow and redeem eCards right from your phone!

You can even add MyScripWallet to your home screen:

- Google Chrome: open the options menu , then select Add to Home Screen
- Safari: Click  on the bottom of the screen, then Add to Home Screen, then Add



**PrestoPay™.** PrestoPay is ShopWithScrip's online payment system that you can use for a convenience fee of \$0.15 per order. When you use PrestoPay, your order payment is transferred securely via the electronic debit of your checking or savings account, and your orders will process faster than if you paid by check. You can't link PrestoPay to a credit card as credit cards charge costly fees that would take a portion of earnings away from our organization.

Enrolling in PrestoPay:

- Login to your ShopWithScrip account and click on PrestoPay under Family Functions.
- Enter your checking and general information.
- Two small deposits will be added to your checking account within two days of entering your information to verify your account.
- Enter these two deposits on ShopWithScrip under PrestoPay, and then select a 4-digit PIN.
- Then you're verified, and you'll get an approval code that you need to send to your coordinator!

## Next Steps

Want to learn more about our scrip fundraiser? Contact our coordinator, Ellen Romano, at 215-663-0691, or by email at cardiofool@me.com.

Have a question for ShopWithScrip? Give them a call at 1-800-727-4715, option 3, or send them an email at [shopwithscrip@glscrp.com](mailto:shopwithscrip@glscrp.com).

JOINING OUR SCRIP PROGRAM





## Safe Environment Requirements for Volunteers

All volunteers who may have any possible contact with children in a parish/school function, or a function that takes place on school or parish property, must have official paperwork filed with the parish office. **As a result of the new Harrisburg laws, please read carefully, as the requirements have changed. All volunteers must have all clearances before they begin volunteering – no provisional status.**

- ☐ Criminal Record Check – Can be filed online at <https://epatch.state.pa.us/>. This clearance for volunteers is now free. *This must be renewed every five years.*
- ☐ PA Child Abuse History – Can now be filed online at <https://www.compass.state.pa.us/cwis/public/home>. Select "individual account." You will have to create an ID and then receive a temporary password, then log back in to create a new password. This clearance is now free for volunteers. *This must be renewed every five years.*
- ☐ Disclosure Statement – Volunteers who have been a PA resident for 10 consecutive years must sign and witness this disclosure (any adult can witness) and return to the parish office. Forms available in the parish office or at: <http://childyouthprotection.org/docs/disclosure%20statement%20volunteers.pdf>
- ☐ Federal Criminal History Report (FBI-Fingerprinting) – **Volunteers who have not been a PA resident for 10 consecutive years must also be fingerprinted.** Applicant must register prior to going to the fingerprint site at: [www.pa.cogentid.com](http://www.pa.cogentid.com). Complete instructions are available on the website. *This must be renewed every five years until volunteer reaches 10 yr. residency in PA. Unfortunately, this is not free. Once you receive your clearance in the mail, please drop off a copy at the parish office.*

**REQUIRED TRAININGS: (Must be completed within 90 days from start date):**

- ☐ Protecting God's Children Safe Environment Training – applicant must register prior to the training at [www.virtus.org](http://www.virtus.org). There is no cost for the training. Create a log-in and password; go to "find session" to register.
  - ☐ Standards of Ministerial Behavior – After the completion of the Safe Environment training, the attendee is asked to sign a form that must be on file at the parish office. The Archdiocese also sends a certificate of completion card to the parish office.
- ☐ Information and Technology Addendum – If you attended the Protecting God's Children Safe Environment Training before July 1, 2011, you will have to review the materials at [http://childyouthprotection.org/docs/3.2B\\_Addendum\\_to\\_Standards.pdf](http://childyouthprotection.org/docs/3.2B_Addendum_to_Standards.pdf), then sign the acknowledgement form (attached) and return to the parish office.
- ☐ Mandatory Reporter Training – this is an online training session at <https://learning.childyouthprotection.org/login/index.php>. For all staff and volunteers, the Mandated Reporter Training must be done through the Archdiocesan training on the website (or if you attended an Archdiocesan training session in 2011); **any other training will be not be accepted.**
  - ☐ Please note that if you began service before December 2011, but did not attend the Mandated Reporter training, you are out of compliance and must complete the online training. Volunteers will need to contact the parish office to learn the level of service they are permitted to provide until the online training has been completed.

For complete information on all requirements and trainings, go to: <http://childyouthprotection.org/>